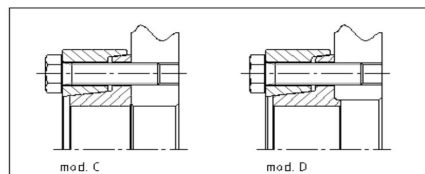
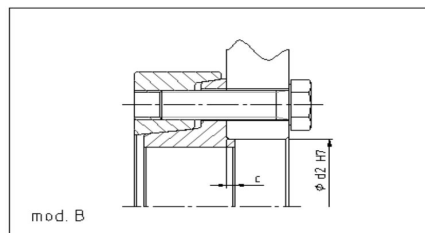
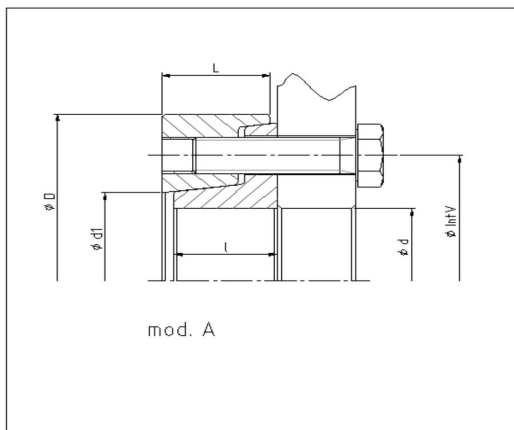


External Locking Assembly MAV 3023 heavy duty

rev. 1



2-part design, 4 models available

Not self-locking

Screws ISO 4014/4017 grade 10.9

Screws & tapers greased with MoS₂

Shaft & hub contact surfaces: GREASE-FREE and DRY

Axial fixation of hub during tightening: yes

Max shaft tolerance: h9

Shaft / hub surface finish: $0.8 \leq Ra \leq 3.2 \mu\text{m}$

Transmissible torque is given by min. capacity

of shaft/lock.ass'y or hub/lock.ass'y contact surfaces

For narrow hub connections (ex. sprockets, brake discs)

⁽¹⁾ screws length for model C and D

Ma: screw tightening torque
Mt: transmissible torque

Example of order: MAV 3023 - 70 x 148 mod. A, B, C or D, hub width for mod. A and B

DIMENSIONS								SCREWS			PERFORMANCES	WEIGHT
d x D	L	IntV	l	d1	c	d2	No.	size ⁽¹⁾	Ma	Mt		
mm	mm	mm	mm	mm	mm	mm			Nm	Nm	kg	
220 x 405	100	320	98	246	5	226	18	M 27 x 140	1.250	148.600	70,8	
210 x 405										148.600		
200 x 405										148.600		
240 x 430	110	340	109	267	5	246	20	M 27 x 150	1.250	175.400	81,0	
230 x 430										175.400		
220 x 430										175.400		
260 x 460	118	356	118	289	5	286	21	M 27 x 160	1.250	192.900	109,4	
250 x 460										192.900		
240 x 460										192.900		
280 x 485	125	360	124	304	5	306	21	M 27 x 180	1.250	195.000	116	
270 x 485										195.000		
260 x 485										195.000		
300 x 520	128	380	126	315	5	330	21	M 27 x 180	1.250	205.900	141	
290 x 520										205.900		
280 x 520										205.900		
320 x 550	136	402	134	336	5	350	24	M 27 x 180	1.250	248.900	161	
310 x 550										248.900		
300 x 550										248.900		
340 x 570	142	424	140	355	8	370	24	M 27 x 180	1.250	262.500	177	
330 x 570										262.500		
320 x 570										262.500		
360 x 610	147	454	144	383	8	400	24	M 30 x 190	1.700	344.000	210	
350 x 610										344.000		
340 x 610										344.000		
390 x 630	167	486	164	428	8	430	24	M 30 x 200	1.700	368.300	250	
380 x 630										368.300		
360 x 630										368.300		
420 x 670	175	506	172	448	10	450	24	M 30 x 220	1.700	383.400	292	
410 x 670										383.400		
390 x 670										383.400		
440 x 700	175	534	172	468	10	470	28	M 30 x 220	1.700	472.100	318	
420 x 700										472.100		
400 x 700										472.100		